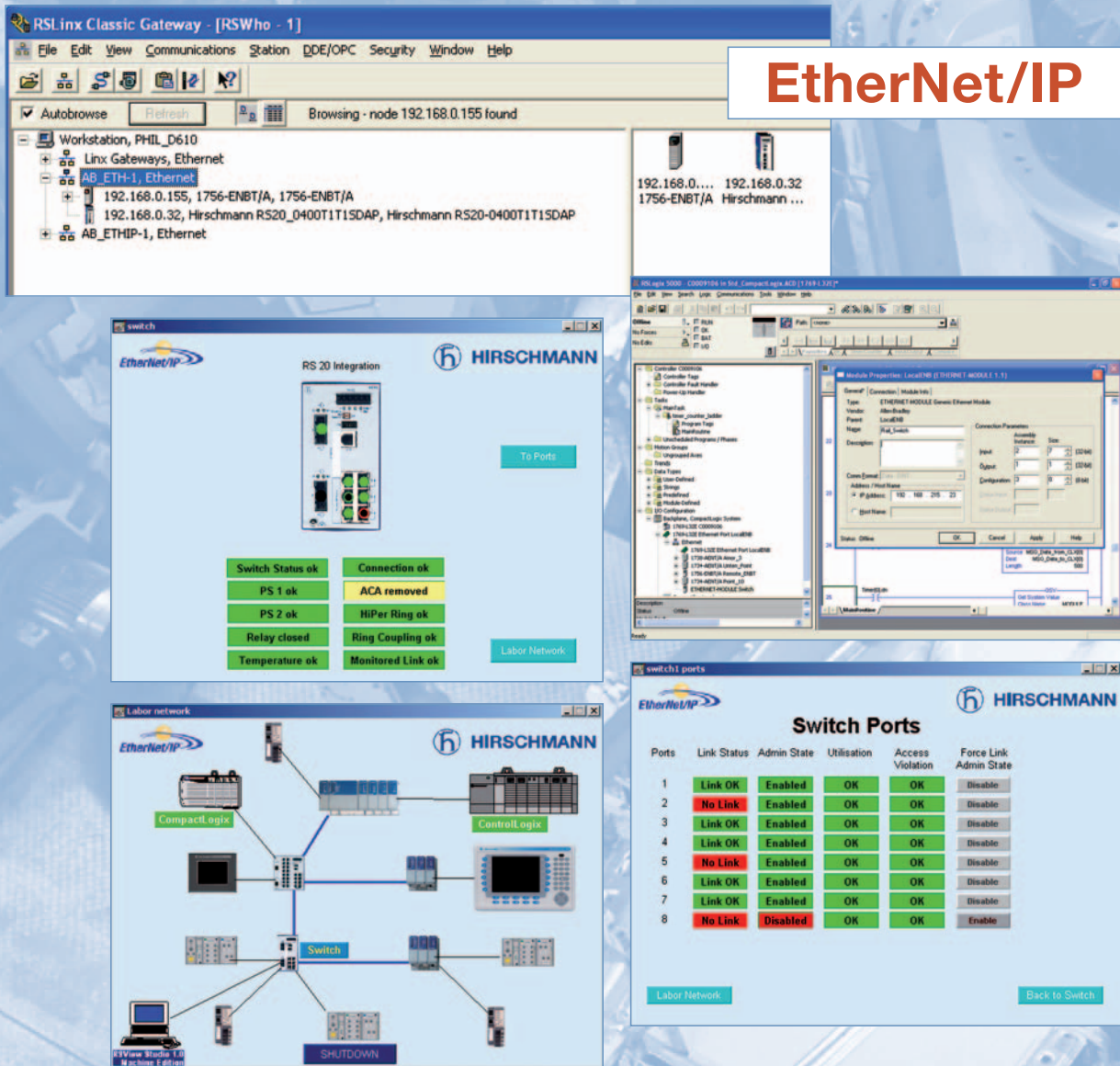


Improve your network communication: EtherNet/IP Profile Switches by Hirschmann.



Product Features

The new fully SNMP and EtherNet/IP managed switches with a broad set of standard features take the switch management to the PLC, so that you can use the management tool that fits your application. No matter if SNMP, web interface or now EtherNet/IP.

- EtherNet/IP functionality is a free option on OpenRail switches – Compact Rail, modular MICE, PowerMICE, or MACH4000 switches – from 4 to 52 ports!
- Easily generate alarms based on network events
- All switch management features remain the same – EtherNet/IP just provides another way to manage and monitor your network directly in RSLogix5000
- Write logic using switch variables (enable/disable a port for a given amount of time, etc.)
- All switch tags and data are directly accessible to your HMI
- Same port options and management features as compact and modular OpenRail managed switches
- Same environmental and approval ratings as OpenRail managed switches

www.hirschmann.com