

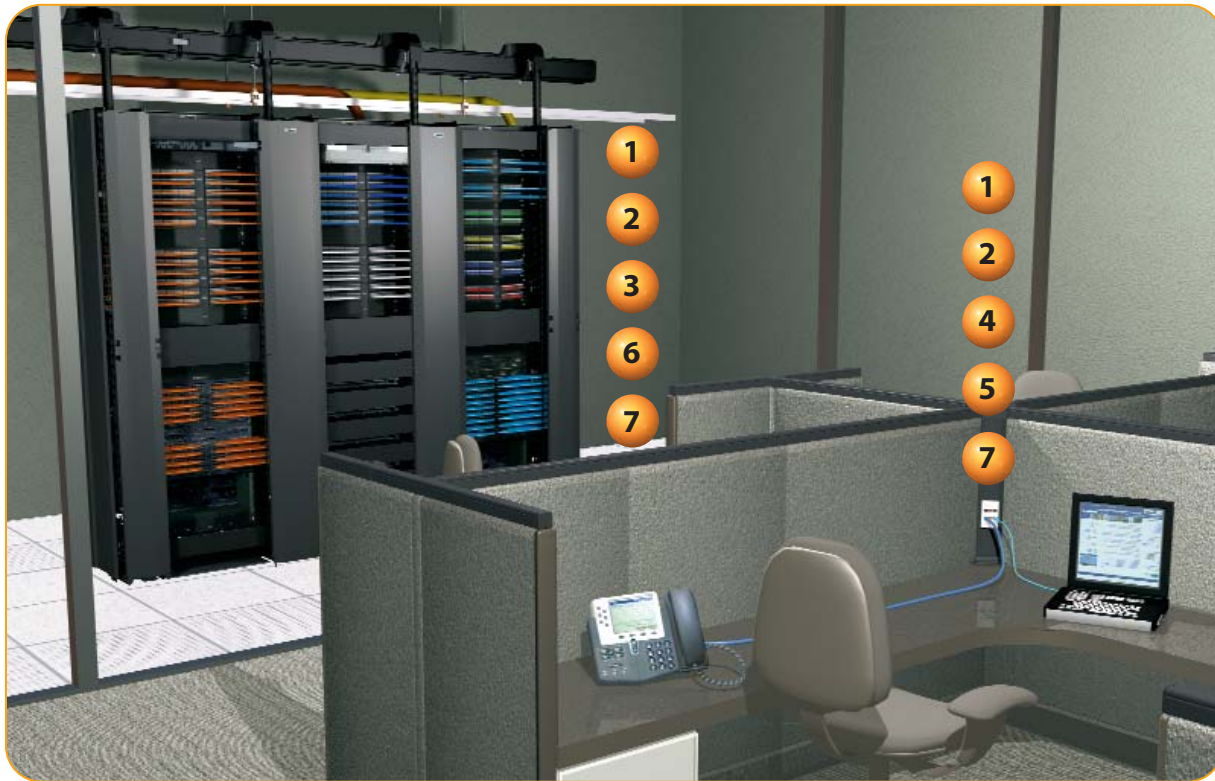


NETKEY® ***CABLING*** ***SYSTEM***

TELECOMMUNICATIONS
ROOM TO WORK AREA



The **NETKEY®** Cabling System provides a complete, standards compliant cabling infrastructure solution for voice, data and video applications. **NETKEY®** Modules feature the universal “keystone” design and are compatible with a wide assortment of modular patch panels, faceplates and surface mount boxes. When teamed with complementary **PANDUIT** products, the **NETKEY®** solutions cover all your needs from the telecommunication room to the work area with the proven innovation and quality you depend on from **PANDUIT**.



1 NETKEY® Modules



2 NETKEY® Patch Cords



3 NETKEY® Patch Panels



4 NETKEY® Faceplates and Surface Mount Boxes



5 Media Distribution



6 Racks and Cable Management



7 Identification and Labeling Systems



NETKEY® Category 6, 5e and 3 Jack Modules

- Meet all industry performance standards for Category 6, 5e and 3
- Punchdown jack modules are 100% performance tested and individually serialized for future traceability



**NK688MBL
NKP5E88MBL**



**NK688MBL-Q
NKP5E88MBL-Q**



NK5E88MIWY



NK5E88MBU-Q



NK388MEIY



NK366UMIGY



NK366MWHY



JR-PAN-2



CJT

NEW!

NEW!

- Snap in and out of keystone openings for easy moves, adds and changes
- Universal label includes T568A and T568B wiring schemes

| Part Number | Description |
|-------------|-------------|
|-------------|-------------|

NETKEY® Category 6 UTP Jack Modules*

| | |
|-------------------|--|
| NK688MIW | Category 6, 8-position, 8-wire, keystone punchdown jack module. |
| NK688MIW-Q | Convenience pack of 25, Category 6, 8-position, 8-wire, keystone punchdown jack modules. |

NETKEY® Category 5e UTP Jack Modules*

| | |
|---------------------|---|
| NKP5E88MIW | Category 5e, 8-position, 8-wire, keystone punchdown jack module. |
| NKP5E88MIW-Q | Convenience pack of 25, Category 5e, 8-position, 8-wire, keystone punchdown jack modules. |
| NK5E88MIWY | Category 5e, 8-position, 8-wire, keystone leadframe jack module. |
| NK5E88MIW-Q | Convenience pack of 25, Category 5e, 8-position, 8-wire, keystone leadframe jack modules. |

NETKEY® Category 3 UTP Jack Modules**

| | |
|--------------------|--|
| NK388MIWY | Category 3, 8-position, 8-wire, keystone leadframe jack module. |
| NK366UMIWIY | Category 3, 6-position, 6-wire, keystone leadframe jack module. Termination cap color-coded to USOC wiring scheme. |
| NK366MIWY | Category 3, 6-position, 6-wire, keystone leadframe jack module. |

*For standard colors other than IW (Off White), replace suffix with EI (Electric Ivory), IG (International Gray), WH (White), BL (Black), BU (Blue), RD (Red), YL (Yellow), GR (Green) or VL (Violet). To order convenience package of 25 jack modules, add -Q to end of part number.

** For standard colors other than IW (Off White), replace suffix with EI (Electric Ivory), IG (International Gray), WH (White) or BL (Black).

| Part Number | Description |
|-------------|-------------|
|-------------|-------------|

NETKEY® Jack Module Termination Tools

| | |
|------------------|--|
| JR-PAN-2* | Fluke** JackRapid Termination Tool for Category 6 and Category 5e NETKEY® Punchdown Modules. |
| CJT-X | Termination tool for Category 3 NETKEY® Leadframe Jack Modules. |

*Fluke JackRapid Termination Tool available through distribution. Contact Fluke customer service at 800-283-5853 to locate a local distributor.

**Fluke is a registered trademark of Fluke Corporation.

Punchdown tools found on page 11.

NETKEY® Copper UTP Patch Cords

- Meet all industry performance standards for Category 6 and 5e
- 100% performance tested



Category 6



Category 5e

- Available in a variety of colors and lengths for design flexibility

| Part Number | Description |
|-------------|-------------|
|-------------|-------------|

Category 6

| | |
|-----------------|--|
| NK6PC^*Y | Category 6, UTP patch cord with modular plugs on each end. |
|-----------------|--|

Category 5e

| | |
|------------------|---|
| NK5EPC^*Y | Category 5e, UTP patch cord with modular plugs on each end. |
|------------------|---|

^Available in 3, 5, 7, 10, 14 and 20 foot lengths.

*For standard colors other than Off White, add suffix BU (Blue), RD (Red), YL (Yellow) or GR (Green) before Y in the part number. For example, the part number of a blue, Category 6, 5-foot patch cord is NK6PC5BUY.

NETKEY® Patch Panels

- Mount to standard TIA/EIA 19" racks
- Punchdown patch panels meet all industry performance standards for Category 6 and 5e
- Modular patch panels accept all NETKEY® Modules

- Optional angled versions available for high density installations
- Strain relief bars assist in cable management and bend radius control
- Filler panels reserve space for future use and direct airflow



NK6PPG12WY
NK5EPPG12WY



NK6PPG24Y
NK5EPPG24Y



NK6PPG48Y
NK5EPPG48Y



NKFP12W



NKFP24Y



NKFP48Y



NKPPA24FMY



NKPPA48FMY



NKMP24Y



NKMP48Y



WB89D



SRB19BLY



SRBM19BLY



DPFP1



CPAF2BLY

| Part Number | Description |
|-------------|-------------|
|-------------|-------------|

Punchdown Patch Panels* Category 6

| | |
|------------|--|
| NK6PPG12WY | Category 6, 12-port punchdown patch panel. Mounts to wall with standard 89D bracket (WB89D). |
| NK6PPG24Y | Category 6, 24-port punchdown patch panel, 1 RU. |
| NK6PPG48Y | Category 6, 48-port punchdown patch panel, 2 RU. |

Category 5e

| | |
|-------------|---|
| NK5EPPG12WY | Category 5e, 12-port punchdown patch panel. Mounts with standard 89D bracket (WB89D). |
| NK5EPPG24Y | Category 5e, 24-port punchdown patch panel, 1 RU. |
| NK5EPPG48Y | Category 5e, 48-port punchdown patch panel, 2 RU. |

*Punchdown patch panels are color-coded for T568A and T568B wiring schemes. Punchdown tools found on page 11.

| Part Number | Description |
|-------------|-------------|
|-------------|-------------|

Modular Patch Panels

| | |
|--------------|--|
| NKFP12W | 12-port modular patch panel. Mounts to wall with standard 89D bracket (WB89D). |
| NKFP24Y | 24-port modular patch panel, 1 RU. |
| NKFP48Y | 48-port modular patch panel, 2 RU. |
| NKFP24KSRBSY | 24-port modular patch panel with strain relief bar, 1 RU. |
| NKFP48KSRBSY | 48-port modular patch panel with strain relief bar, 2 RU. |

Flush Mount Patch Panels

| | |
|------------|---|
| NKPPA24FMY | 24-port flush mount angled modular patch panel, 1 RU. |
| NKPPA48FMY | 48-port flush mount angled modular patch panel, 2 RU. |
| NKPP24FMY | 24-port flush mount modular patch panel, 1 RU. |
| NKPP48FMY | 48-port flush mount modular patch panel, 2 RU. |

All Metal Patch Panels

| | |
|---------|--|
| NKMP24Y | 24-port all metal modular patch panel, 1 RU. |
| NKMP48Y | 48-port all metal modular patch panel, 2 RU. |

| Part Number | Description |
|-------------|-------------|
|-------------|-------------|

Wall Mount Bracket

| | |
|-------|---|
| WB89D | Wall mount bracket. Ideal for use with 12-port punchdown or modular patch panels. |
|-------|---|

Strain Relief Bars

| | |
|-------------|--|
| SRB19BLY | Strain relief bar extends 2" from standard 19" rack for additional cable support. |
| SRBM19BLY | Strain relief bar and <i>TAK-TY</i> ® Hook & Loop Cable Ties for additional cable support. |
| SRBS19BL-XY | Straight strain relief bar. |

Filler Panels

| | |
|----------|---------------------------|
| DPFP1 | 1 RU flat filler panel. |
| DPFP2 | 2 RU flat filler panel. |
| CPAF1BLY | 1 RU angled filler panel. |
| CPAF2BLY | 2 RU angled filler panel. |

NETKEY® Faceplates

- Accept all NETKEY® Modules
- Available in a variety of port densities



NK1FNIW



NK2FNIW



NK3FNIW



NK4FNIW



NK1FIWY



NK2FIWY



NK4FIWY



NK2HSFIWY



NK4HSFIWY



NKF2S



NKF4S



NKF6S

- Optional labels for easy port identification

| Part Number | Description |
|-------------|-------------|
|-------------|-------------|

Flush Mount Screw-On Faceplates‡

| | |
|-----------|---|
| NK*FNIW | Single gang, flush mount vertical faceplate. |
| NK**FIWY | Single gang, flush mount vertical faceplate with labels. |
| NK^HSFIWY | Single gang, flush mount, sloped, horizontal faceplate with labels. |

Stainless Steel Faceplates

| | |
|-------|---|
| NKF^S | Single gang, stainless steel, horizontal faceplate with labels. |
|-------|---|

*Available in 1, 2, 3 and 4 port density configurations.

**Available in 1, 2, 3, 4, 6 and 12 port density configurations.

^Available in 2 or 4 port density configurations.

^^Available in 2, 4 or 6 port density configurations.

‡For standard colors other than IW (Off White), replace suffix with EI (Electric Ivory), WH (White) or BL (Black).

NETKEY® Faceplate Frames and Modular Inserts

- Inserts and faceplate frames enable design flexibility
- Accept all NETKEY® Modules



CBEIWY



CBIW



NKHS2IW-X



NKHS2SIW-X



NKHF2MIW-X



CHB2MIW-X

- Available in a variety of port densities and orientation
- Optional labels for easy port identification

| Part Number | Description |
|-------------|-------------|
|-------------|-------------|

Executive Series Frames

| | |
|-----------|--|
| CBEIWY | Single gang faceplate frame accepts two 1/2 size modular inserts or three 1/3 size modular inserts. Supplied with labels and label cover/screw covers. |
| CBEIW-2GY | Double gang faceplate frame accepts four 1/2 size modular inserts or six 1/3 size modular inserts. Supplied with labels and label cover/screw covers. |

Classic Series Frames

| | |
|---------|---|
| CBIW | Single gang faceplate frame accepts two 1/2 size modular inserts or three 1/3 size modular inserts. |
| CBIW-2G | Double gang faceplate frame accepts two 1/2 size modular inserts or three 1/3 size modular inserts. |

Modular Inserts

| | |
|------------|---|
| NKHS2IW-X | 1/2 size, sloped modular insert. Accepts two NETKEY® Modules. |
| NKHS2SIW-X | 1/2 size, sloped, shuttered, modular insert. Accepts two NETKEY® Modules. |
| NKHF2MIW-X | 1/3 size flat modular insert. Accepts two NETKEY® Modules. |
| CHB2MIW-X | 1/3 blank modular insert reserves space for future use. |

For standard colors other than IW (Off White), replace suffix with EI (Electric Ivory), WH (White) or BL (Black). Audio/Video inserts found on page 9.

NETKEY® Module Frames and Furniture Faceplate



NK2106MFIW



NK4106MFIW



NK2RMFIW



NK4RMFIW



NK4MFIW

| Part Number | Description |
|-------------|--|
| NK2106MFIW | Screw mount "106" duplex module frame. Accepts two NETKEY® Modules. |
| NK4106MFIW | Screw mount "106" duplex module frame. Accepts four NETKEY® Modules. |
| NK2RMFIW | Screw mount module frame. Accepts two NETKEY® Modules. Compatible with standard NEMA outlet boxes and rectangular faceplates. |
| NK4RMFIW | Screw mount module frame. Accepts four NETKEY® Modules. Compatible with standard NEMA outlet boxes and rectangular faceplates. |
| NK4MFIW | Snap on modular furniture faceplate. Accepts four NETKEY® Modules. |

For standard colors other than IW (Off White), replace suffix with EI (Electric Ivory), WH (White) or BL (Black).

NETKEY® Phone Plate



KWP3Y

| Part Number | Description |
|-------------|--|
| KWPY | Stainless steel wall phone plate accepts one NETKEY® Module. |
| KWP3Y | Stainless steel wall phone plate supplied with one Category 3 keystone leadframe module. |

NETKEY® Surface Mount Boxes

- Accept all NETKEY® Modules
- Include mounting screws and adhesive tape; optional magnet available



NK2BXIW-A



NK4BXIW-AY



NK6BXIW-AY



CBM-X

- Compatible with PANDUIT LD3, LD5, and LD10 Raceway

| Part Number | Description |
|-------------|---|
| NK2BXIW-A | Surface mount box accepts two NETKEY® Modules. |
| NK4BXIW-AY | Surface mount box accepts four NETKEY® Modules. |
| NK6BXIW-AY | Surface mount box accepts six NETKEY® Modules. |
| CBM-X | Optional magnet for mounting on metal surfaces. |

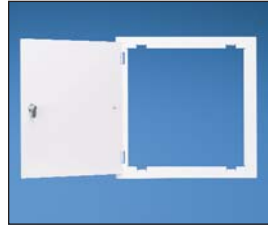
For surface mount box standard colors other than IW (Off White), replace suffix with EI (Electric Ivory), WH (White) or BL (Black).

NEW! Media Distribution Enclosures

- Enclosures offer easy installation, flexibility for quick modifications and scalability for future growth needs
- Grid pattern in base provides mounting and flexibility for the hubs
- Cantilever mounting slots flex to accommodate misaligned studs
- Integrated drywall positioning slots
- Hinged door (optional) available with lock and key



MS14B



MS14HD



MSB14E



Populated
Advanced Enclosure

| Part Number | Description |
|-------------|-------------|
|-------------|-------------|

Advanced Enclosure Bases

| | |
|-------|---|
| MS14B | 14" x 14" media distribution enclosure base. 14.25"H x 14.25"W x 4.00"D (362.0mm x 362.00mm x 101.6mm). |
| MS24B | 14" x 24" media distribution enclosure base. 24.25"H x 14.25"W x 4.00"D (616.0mm x 362.00mm x 101.6mm). |

Hinged Doors

| | |
|--------|---|
| MS14HD | 14" x 14" hinged door with lock and key. 15.81"H x 15.75"W x .87"D (401.6mm x 400.00mm x 22.1mm). |
| MS24HD | 14" x 24" hinged door with lock and key. 25.81"H x 15.75"W x .87"D (655.6mm x 400.00mm x 22.1mm). |

Base and door for advanced enclosures sold separately.

Basic Enclosures

| | |
|--------|---|
| MSB14E | 14" x 14" media distribution basic enclosure with screw down door. 14.25"H x 14.25"W x 4.00"D (362.0mm x 362.00mm x 101.6mm). |
| MSB24E | 14" x 24" media distribution basic enclosure with screw down door. 24.25"H x 14.25"W x 4.00"D (616.0mm x 362.00mm x 101.6mm). |

All product color is White.

NEW! Media Distribution Voice (Phone) Hubs

- Split incoming phone lines up to eight locations to provide basic phone, fax, and modem services
- Expansion hub (optional) available for an additional eight connections



NKM8PD



NKM8PE

| Part Number | Description |
|-------------|--|
| NKM8PD | Phone distribution hub with test ports and a security interface. |
| NKM8PE | Phone expansion hub. |

All product color is Black.

NEW! Media Distribution Patch Panel

- Front accessible
- Accept all NETKEY® Modules



NKM8PP

| Part Number | Description |
|-------------|-----------------------------|
| NKM8PP | 8-port modular patch panel. |

All product color is Black.

NEW! Media Distribution Video Splitters

- Split incoming video/coax to distribute services
- Pre-mounted onto metal bracket for quick installation



MS4S2G



MS8S2G

- Snap directly into grid patterned enclosures for easy installation, moves, adds and changes

| Part Number | Description |
|------------------------|--|
| 1 GHz Splitters | |
| MS4S1G | Media distribution 1 x 4 passive video splitter with 1 GHz performance to distribute high-quality RF signals to up to four outputs. |
| MS8S1G | Media distribution 1 x 8 passive video splitter with 1 GHz performance to distribute high-quality RF signals to up to eight outputs. |
| 2 GHz Splitters | |
| MS4S2G | Media distribution 1 x 4 passive video splitter with 2 GHz performance to distribute high-quality RF signals to up to four outputs. |
| MS8S2G | Media distribution 1 x 8 passive video splitter with 2 GHz performance to distribute high-quality RF signals to up to eight outputs. |

NEW! Media Distribution Data Hub

- Meets Category 5e performance standards
- Front side 110 punchdown termination

- Allows easy access to connections within the enclosure



NKM5E6PP

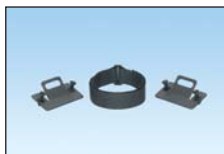
| Part Number | Description |
|-------------|--|
| NKM5E6PP | Media distribution data hub for up to six different locations. |

All product color is Black.

NEW! Media Distribution Accessories

- Bracket accepts third party equipment for design flexibility
- Cable management kit assists in proper cable routing within the enclosure

- Grounding kit includes assists in properly grounding media distribution
- Cable management ring controls cable bend radius



MSEBRKT



MSCM-KIT



MSGRD-KIT



MSCMR

| Part Number | Description |
|---|---|
| Media Distribution Kits | |
| MSEBRKT | Media distribution equipment bracket that allows a variety of third-party equipment to be securely mounted within an enclosure. |
| MSCM-KIT | Media distribution cable management kit that includes the necessary components to help manage cables. |
| MSGRD-KIT | Media distribution grounding kit that includes necessary components to help ground media distribution. |
| Media Distribution Cable Management Ring | |
| MSCMR | Media distribution cable management ring. |

Punchown Systems

- Meet all industry performance standards for Category 6 and Category 5e
- Can be field terminated
- Ideal for use in cross-connect and consolidation point applications

GP6™ PLUS Category 6 Kits



GPKBW144Y



GPKBW432Y



GPB2884R4WJY



GPB484R4WJY

| Part Number | Description |
|------------------------------|---|
| Field Terminable Kits | |
| GPKBW144Y | 144-pair (36-port) Category 6 high-density punchdown field termination kit with legs. |
| GPKBW432Y | 432-pair (108-port) Category 6 high-density punchdown field termination kit with legs. |
| GPKBW24Y | 96-pair (24-port) Category 6 standard density punchdown base field termination kit with legs. |
| GPKBW72Y | 288-pair (72-port) Category 6 standard density punchdown base field termination kit with legs. |
| Rack Mount Kits | |
| GPB2884R2Y | Two 144-pair (36-port) Category 6 high-density punchdown bases pre-mounted to 19" panel with 4-pair connector kit included. |
| GPB2884R4WJY | Two 144-pair (36-port) Category 6 high-density punchdown bases and jumper troughs pre-mounted to 19" panel with 4-pair connector kit included. |
| GPB484R2Y | Two 96-pair (24-port) Category 6 standard density punchdown bases pre-mounted to 19" panel with 4-pair connector kit included. |
| GPB484R4WJY | Two 96-pair (24-port) Category 6 standard density punchdown bases and jumper troughs pre-mounted to 19" panel with 4-pair connector kit included. |

Punchdown tools found on page 11.

For complete punchdown system offering, reference the *PANDUIT* Physical Infrastructure Systems Catalog (SA-NCCB51) or visit www.panduit.com.

PAN-PUNCH® Category 5e Kits



P110KB1004Y



P110KB3004Y



P110B1004R2Y



P110B1004R4WJY

| Part Number | Description |
|------------------------------|--|
| Field Terminable Kits | |
| P110KB1004Y | 100-Pair Category 5e field terminable kit includes base, 4-pair connector kit, five 4-pair connectors, one 5-pair connector per row of 25 pairs, two label holders and two labels. |
| P110KB1005Y | 100-Pair Category 5e field terminable kit includes base, 5-pair connector kit, five 5-pair connectors per row of 25 pairs, two label holders and two labels. |
| P110KB3004Y | 300-Pair Category 5e field terminable kit includes base, 4-pair connector kit, five 4-pair connectors, one 5-pair connector per row of 25 pairs, two label holders and two labels. |
| P110KB3005Y | 300-Pair Category 5e field terminable kit includes base, 5-pair connector kit, five 5-pair connectors per row of 25 pairs, two label holders and two labels. |
| Rack Mount Kits | |
| P110B1004R2Y | Two 100-pair Category 5e punchdown bases pre-mounted to 19" panel with 4-pair connector kit which includes five 4-pair connectors and one 5-pair connector per row of 25 pairs. |
| P110B1005R2Y | Two 100-pair Category 5e punchdown bases pre-mounted to 19" panel with 5-pair connector kit which includes five 5-pair connectors per row of 25 pairs. |
| P110B1004R4WJY | Two 100-pair Category 5e punchdown bases and jumper troughs pre-mounted to 19" panel with 4-pair connector kit which includes five 4-pair connectors and one 5-pair connector per row of 25 pairs. |
| P110B1005R4WJY | Two 100-pair Category 5e punchdown bases and jumper troughs pre-mounted to 19" panel with 5-pair connector kit with five 5-pair connectors per row of 25 pairs. |

Punchdown tools found on page 11.

For complete punchdown system offering, reference the *PANDUIT* Physical Infrastructure Systems Catalog (SA-NCCB51) or visit www.panduit.com.

Termination Tools



GPDTM



PDT110

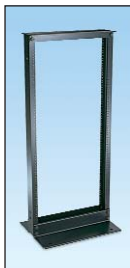


NKSPB

| Part Number | Description |
|------------------------------------|---|
| GP6™ PLUS Termination Tool | |
| GPDTM | 4-Pair punchdown tool and blade terminates and cuts up to 4-pairs of UTP cable in one operation. Ideal for use with GP6™ PLUS Punchdown System. |
| GPDTMB | Replacement blade for 4-pair punchdown tool (GPDTM). |
| PAN-PUNCH® Termination Tool | |
| PDT110 | Single pair punchdown tool and blade terminates and cuts UTP cable in one operation. Ideal for use with PAN-PUNCH® Punchdown System. |
| PDTH110 | Replacement blade for single pair punchdown tool (PDT110). |
| Punchdown Base | |
| NKSPB | Base used to assist in terminating punchdown modules. |

Racks and Cable Management

- Cable management products and accessories maintain bend radius control and cable performance while bundling and securing cable to prevent snags and stress from over bending



CMR19X84



WMPV45E



WMP1E



CMPH2



CMPHF1

| Part Number | Description |
|-------------|---|
| CMR19X84 | Standard EIA 19" aluminum rack. 84"H x 19"W x 3"D. 45 RU. |
| WMPV45E | NETRUNNER™ front and rear vertical cable manager with dual hinged cover, wire retainers and side mount brackets. 45 RU. |
| WMPSE | PATCHLINK™ front and rear horizontal cable manager with dual hinged cover. 1 RU. |
| WMP1E | PATCHLINK™ front and rear horizontal cable manager with dual hinged cover. 2 RU. |
| CMPH1 | OPENACCESS™ front and rear horizontal cable manager with optional snap on cover. 1 RU. |
| CMPH2 | OPENACCESS™ front and rear horizontal cable manager with optional snap on cover. 2 RU. |
| CMPHF1 | OPENACCESS™ front only horizontal cable manager with optional snap on cover. 1 RU. |

For complete cable management and bonding/grounding offering, reference the PANDUIT Physical Infrastructure Systems Catalog (SA-NCCB51) or visit www.panduit.com.

Identification and Labeling Systems

- Variety of labeling systems and labels enable quick and easy network identification



LS8E



LS8E-KIT



TDP43MY

| Part Number | Description |
|---|---|
| PANTHER™ LS8E Hand-Held Thermal Transfer Printer and Accessories | |
| LS8E | LS8E printer, one cassette of self-laminating labels, six AA alkaline batteries and quick reference card. |
| LS8E-KIT | LS8E printer, one cassette of self-laminating labels, six AA alkaline batteries, rigid carrying case, LS8-PCKIT, LS8-IB, operator's manual and quick reference card. |
| S100X150VAC | Self-laminating, white vinyl label for use with LS8E printer. |
| Thermal Transfer Desktop Printer and Accessories | |
| TDP43MY | 300 dpi printer, PANDUIT® EASY-MARK™ Labeling Software, hybrid black ribbon, AC power adapter with US and Europlug power cords, operator's manual and quick reference card. |
| S100X150VA1Y | Self-laminating, white vinyl label for use with thermal transfer desktop printer. |

For complete identification offering, reference the PANDUIT Physical Infrastructure Systems Catalog (SA-NCCB51) or visit www.panduit.com.



PANDUIT Corp.
Tinley Park, Illinois 60477-3091

For more information
Visit us at www.panduit.com
Contact Customer Service by email: cs@panduit.com
or by phone: 800-777-3300



PANDUIT Europe Ltd.
London, UK
cs-emea@panduit.com
Phone: 44.20.8601.7200



PANDUIT Japan
Tokyo, Japan
cs-japan@panduit.com
Phone: 81.3.6863.6000



PANDUIT Singapore Pte. Ltd.
Republic of Singapore
cs-ap@panduit.com
Phone: 65.6305.7575



PANDUIT Latin America
Jalisco, Mexico
cs-la@panduit.com
Phone: 52.333.777.6000



PANDUIT Australia Pty. Ltd.
Victoria, Australia
cs-aus@panduit.com
Phone: 61.3.9794.9020



PANDUIT Canada
Markham, Ontario
cs-cdn@panduit.com
Phone: 800.777.3300

WORLDWIDE HEADQUARTERS

For a copy of *PANDUIT* product warranties, log on to www.panduit.com/warranty