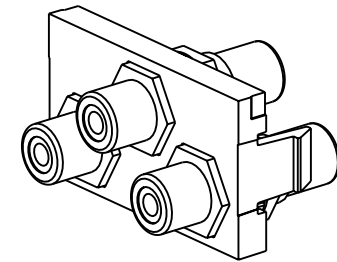
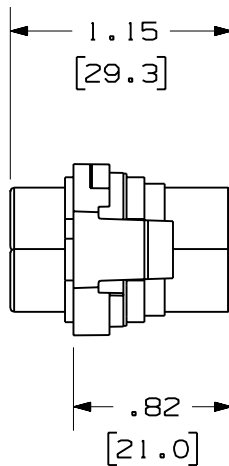
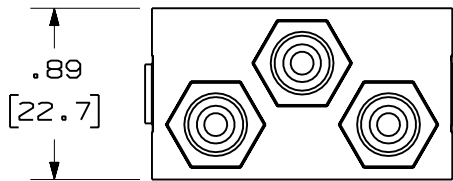
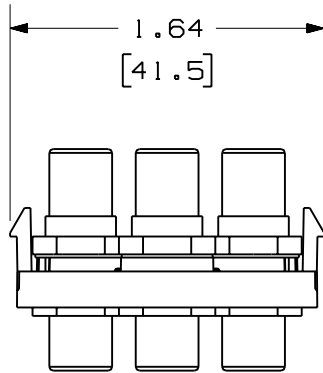


THIS COPY IS PROVIDED ON A RESTRICTED BASIS AND IS NOT TO BE USED IN ANY WAY DETRIMENTAL TO THE INTERESTS OF PANDUIT CORP.




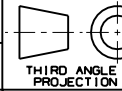
PANDUIT P/N	WEIGHT
CHR3WYR**	.78 LB/10 PCS
CHR3RGB**	(353.5 g/10 PCS)

NOTES:

- SEE CURRENT CATALOG FOR ADDITIONAL PART NUMBER SUFFIXES TO INDICATE COLOR AND OR PACKAGE QUANTITY.
- SEE CATALOG FOR COMPLETE LIST OF PARTS APPLICABLE FOR USE WITH THIS PART.
- DIMENSIONS IN PARENTHESES ARE IN METRIC.
- PART INCLUDES:  
 CHR3WYR\*\* -  
 1- 1/3 INSERT BASE  
 1- WHITE RCA COUPLER (ASSEMBLED)  
 1- YELLOW RCA COUPLER (ASSEMBLED)  
 1- RED RCA COUPLER (ASSEMBLED)  
 CHR3RGB\*\* -  
 1- 1/3 INSERT BASE  
 1- RED RCA COUPLER (ASSEMBLED)  
 1- GREEN RCA COUPLER (ASSEMBLED)  
 1- BLUE RCA COUPLER (ASSEMBLED)

MODEL FILENAME	MO2190AC_13RD_RCAX3_01.PRT	SIZE	A
DRAWING FILENAME	MO2190AC_DC_01A.PRT		

1/3 INSERT WITH 3 RCA COUPLERS  
CUSTOMER DRAWING

 <b>PANDUIT</b> ™ CORP. TINLEY PARK, ILL 60477	I.I. NUMBER	N/A
	PRODUCT SPEC	N/A
 THIRD ANGLE PROJECTION	WORK INSTRUCTION	N/A
	SCALE	NONE
DRAWN BY JsP	REVIEW DRAWING NUMBERS	PART NO. CHR3WYR** CHR3RGB**
DATE 4-4-06	MATERIAL: INSERT- ABS COUPLER- BRASS	DRAWING NO. 02190-10
CHK'D		

REV	DATE	BY	CHK	DESCRIPTION	ECN	R	CUST	SUP	OTH
R	4-4-06	JsP		RELEASED TO PRODUCTION	02190-10				