

# PanNet® Audio/Video Offering



**PANDUIT®**  
building a smarter,  
unified business foundation  
Connect. Manage. Automate.

## PanNet® Audio/Video Offering



The audio/video industry is constantly evolving and adding new technology to the market. This technology typically requires unique products or solutions to help deliver the best performance. Audio/video systems are becoming more integrated with connectivity installations causing installers and contractors to look for a source that will best supply what is needed in the field. Panduit Audio/Video products are a comprehensive offering to fit the customers' needs.



CMUSBAAIW



CMHDMIW



CMFIW



CMFSRIWY



CMD15HDIWY



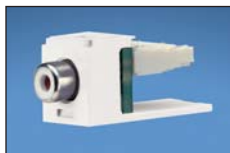
CMDBIW-X



CJRYIW



CJRIIW



CJRWIW

Part Number	Description	Color*
<b>Mini-Com® USB Module</b>		
CMUSBAAIW	USB 2.0 female A to female A coupler module.	Off White

USB Blockout devices also available. See [www.panduit.com](http://www.panduit.com) for more information.

<b>Mini-Com® HDMI Module</b>		
CMHDMIW	HDMI 1.3 Type A female to female category 2 coupler module.	Off White

<b>Mini-Com® F-Type Modules</b>		
CMFIW	Module supplied with 75 ohm industry standard F-type coupler.	Off White
CMFSRIWY	Module supplied with 75 ohm self-terminating F-type coupler.	Off White

<b>Mini-Com® 15-Pin High-Density D-Subminiature Module and Base</b>		
CMD15HDIWY	2-position module supplied with one 15-pin DB connector mounted to a printed circuit board; terminates on site.	Off White
CMDBIW-X	2-position module base which accepts 9-pin and 15-pin high density D-subminiature connectors. For solder or crimp type connectors only.	Off White

<b>Mini-Com® RCA 110 Punchdown Modules</b>		
CJRYIW	Module supplied with one RCA connector with yellow insert.	Off White
CJRIIW	Module supplied with one RCA connector with red insert.	Off White
CJRWIW	Module supplied with one RCA connector with white insert.	Off White

\*For other colors replace suffix IW (Off White) with EI (Electric Ivory), WH (White), IG (International Gray), or BL (Black).



CMRPRIW



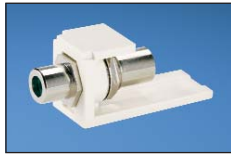
CMRPYIW



CMRPWIW



CMRPBIW



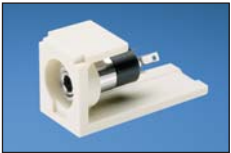
CMRPGIW



CHR3RGBIW



CHR3WYRIW



CM35MSSIW



CM35MSCIWY



CMBPBIWY



CMBPRIWY



CMBA75IWY



CMBAIWY

Part Number	Description	Color*
<b>Mini-Com® RCA Pass-Through Modules</b>		
CMRPRIW	Module supplied with one RCA pass-through coupler with red insert.	Off White
CMRPYIW	Module supplied with one RCA pass-through coupler with yellow insert.	Off White
CMRPWIW	Module supplied with one RCA pass-through coupler with white insert.	Off White
CMRPBIW	Module supplied with one RCA pass-through coupler with blue insert.	Off White
CMRPGIW	Module supplied with one RCA pass-through coupler with green insert.	Off White

#### Mini-Com® RCA 1/3 Inserts

CHR3RGBIW	1/3 insert, with three RCA pass-through couplers. RCA insert colors are red, green and blue. R, G, B component video.	Off White
CHR3WYRIW	1/3 insert, with three RCA pass-through couplers, RCA insert colors are white, yellow and red. Composite video are left and right stereo.	Off White

#### Mini-Com® 3.5mm Stereo Connector and Coupler Modules

CM35MSSIW	Module supplied with one 3.5mm (1/8") stereo headset solder-type connector.	Off White
CM35MSCIWY	3.5mm stereo coupler module.	Off White

#### Mini-Com® 5-Way Binding Post Modules

CMBPBIWY <sup>^</sup>	Module supplied with one 5-way binding post with black stripe.	Off White
CMBPRIWY <sup>^</sup>	Module supplied with one 5-way binding post with red stripe.	Off White

#### Mini-Com® BNC Coax Coupler Modules

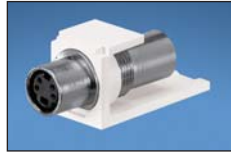
CMBA75IWY	Module supplied with 75 ohm industry standard BNC coupler.	Off White
CMBAIWY	Module supplied with 50 ohm industry standard BNC coupler.	Off White

\*For other colors replace suffix IW (Off White) with EI (Electric Ivory), WH (White), IG (International Gray), or BL (Black).

<sup>^</sup>For other colors replace suffix IW (Off White) with EI (Electric Ivory), or WH (White).



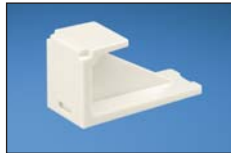
CJSVIW



CMSVCIWY



CMBRS485OR



CMBIW-X



CHD9CIWY



CHD15HDCIWY



CHD15HDSCIWY



CBIW



CBIW-2G



CBEIWY



CBEIW-2GY

Part Number	Description	Color*
<b>Mini-Com® S-Video Modules</b>		
CJSVIW	Module supplied with one S-Video punchdown connector.	Off White
CMSVCIWY	Module supplied with one S-Video pass-through coupler.	Off White

### Mini-Com® BAS Connector Module

CMBRS485OR**	Module supplied with 22 AWG min/18 AWG max connector.	Orange
--------------	---	--------

### Mini-Com® Blank Module

CMBIW-X	Module, reserves space for future use.	Off White
---------	--	-----------

### D-Subminiature Inserts

CHD9CIWY	1/3 insert with 9-pin female to female coupler.	Off White
CHD15HDCIWY	1/3 insert with 15-pin high density female to female coupler, SVGA capable.	Off White
CHD15HDSCIWY	1/3 insert with one 15-pin DB connector mounted to a printed circuit board; terminates on site; SVGA capable.	Off White

### Faceplate Frames

CBIW	Single gang faceplate frame accepts two 1/2 size module inserts or three 1/3 size module inserts.	Off White
CBIW-2G	Double gang faceplate frame accepts up to four 1/2 size module inserts or six 1/3 size module inserts.	Off White
CBEIWY	Single gang faceplate frame accepts up to two 1/2 size module inserts or three 1/3 size module inserts. Supplied with labels and label cover/screw covers.	Off White
CBEIW-2GY	Double gang faceplate frame which accepts up to four 1/2 size module inserts or six 1/3 size module inserts. Supplied with labels and label cover/screw covers.	Off White

\*For other colors replace suffix IW (Off White) with EI (Electric Ivory), WH (White), IG (International Gray), or BL (Black).

\*\*For other colors replace suffix OR (Orange) with BL (Black), GR (Green), RD (Red), or YL (Yellow).

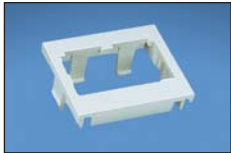




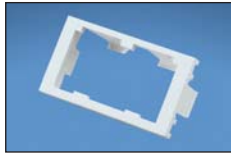
CHS2SIW-X



CHS2IW-X



CHF2IW-X



CHF2MIW-X



CHB2IW-X



CHB2MIW-X



CFPL2IWY



CFPL3IWY



CFPL4IWY



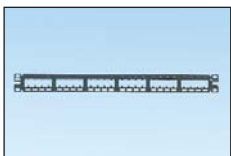
CFPL6IWY



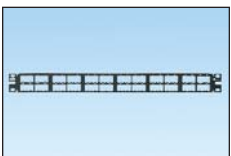
CPPA24FMWBLY



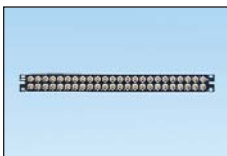
CPPA48HDWBLY



CPP24FMBLY



CPP48HDWBLY



CP48BNCBLY

Part Number	Description	Color*
<b>Mini-Com® Inserts</b>		
CHS2SIW-X	Two module space, 1/2 size, sloped shuttered insert accepts two Mini-Com® Modules.	Off White
CHS2IW-X	Two module space, 1/2 size, sloped insert accepts two Mini-Com® Modules.	Off White
CHF2IW-X	Two module space, 1/2 size, flat insert accepts two Mini-Com® Modules.	Off White
CHF2MIW-X	Two module space, 1/3 size, flat insert accepts two Mini-Com® Modules.	Off White
CHB2IW-X	1/2 blank insert. Reserves space for future upgrades.	Off White
CHB2MIW-X	1/3 blank insert. Reserves space for future upgrades.	Off White

#### Mini-Com® Classic Faceplates with Label and Label Cover

CFPL2IWY	Single gang, vertical faceplate accepts two Mini-Com® Modules.	Off White
CFPL3IWY	Single gang, vertical faceplate accepts three Mini-Com® Modules.	Off White
CFPL4IWY	Single gang, vertical faceplate accepts four Mini-Com® Modules.	Off White
CFPL6IWY	Single gang, vertical faceplate accepts six Mini-Com® Modules.	Off White

#### Mini-Com® Modular Patch Panels

CPPA24FMWBLY	24-port angled flush mount patch panel supplied with rear mounted faceplates, 1RU.	Black
CPPA48HDWBLY	48-port angled high-density patch panel supplied with rear mounted faceplates, 1RU.	Black
CPP24FMBLY	24-port flat flush mount patch panel supplied with rear mounted faceplates, 1RU	Black
CPP48HDWBLY	48-port flat high-density patch panel supplied with rear mounted faceplates, 1RU.	Black

#### Mini-Com® BNC Coupler Panel

CP48BNCBLY	48-port patch panel with 48 pre-installed 75 ohm BNC couplers.	Black
------------	--	-------

\*For other colors replace suffix IW (Off White) with EI (Electric Ivory), WH (White), IG (International Gray), or BL (Black). All faceplate frames supplied with mounting screws.

## Real-World Solutions

*With a proven reputation for excellence and innovation, Panduit and our partners work with you to overcome challenges and implement real-world solutions that create a competitive business advantage. Panduit offers the broadest range of solutions, from data centers and intelligent buildings to manufacturing operations, to help you build a **smarter, unified business foundation**.*



### Technology Leadership

Panduit develops innovative physical infrastructure solutions that meet the rapidly changing needs of our clients, from hardware and software to advisory services. This commitment is supported by investment in advanced research, solutions-focused product development, world-class manufacturing, and collaboration with customers at the forefront of technology.



### Partner Ecosystem

Our best-in-class partner ecosystem offers a comprehensive portfolio of services that span the project lifecycle, from planning and design to delivery, deployment, maintenance, and operation. Panduit business partners – distributors, and certified architects, consultants, engineers, designers, system integrators, and contractors – are qualified to help you achieve your objectives and realize predictable and measurable results.



### Strategic Alliances

Panduit cultivates long-term strategic alliances with industry leaders, including Cisco Systems, EMC, IBM, and Rockwell Automation, to develop, optimize, and validate solutions for our customers. This investment in people and resources helps solve our customers' greatest business challenges.



### Global Business Commitment

Panduit is committed to delivering a consistently high level of quality and service the world over. With a presence in more than 100 countries, local Panduit sales representatives and technical specialists offer guidance and support that bring value to your business. Our global supply chain, which includes manufacturing, customer service, logistics, and distribution partners, provides prompt response to your inquiries and streamlines delivery to any worldwide destination.



### Sustainability

With a commitment to environmental sustainability, Panduit develops and implements solutions that protect, replenish, and restore the world in which we live. This commitment is demonstrated by Panduit's LEED Gold certified World Headquarters, leveraging the Unified Physical Infrastructure<sup>SM</sup> approach to enable convergence of critical building systems to drive energy efficiency and ongoing operational improvement.

**Panduit Corp.**  
**World Headquarters**  
**Tinley Park, IL 60487**

[cs@panduit.com](mailto:cs@panduit.com)

**US and Canada: 800.777.3300**

**Europe, Middle East, and Africa:**

**44.208.601.7200**

**Latin America: 52.33.3777.6000**

**Asia Pacific: 65.6305.7575**

[www.panduit.com](http://www.panduit.com)

**PANDUIT®**